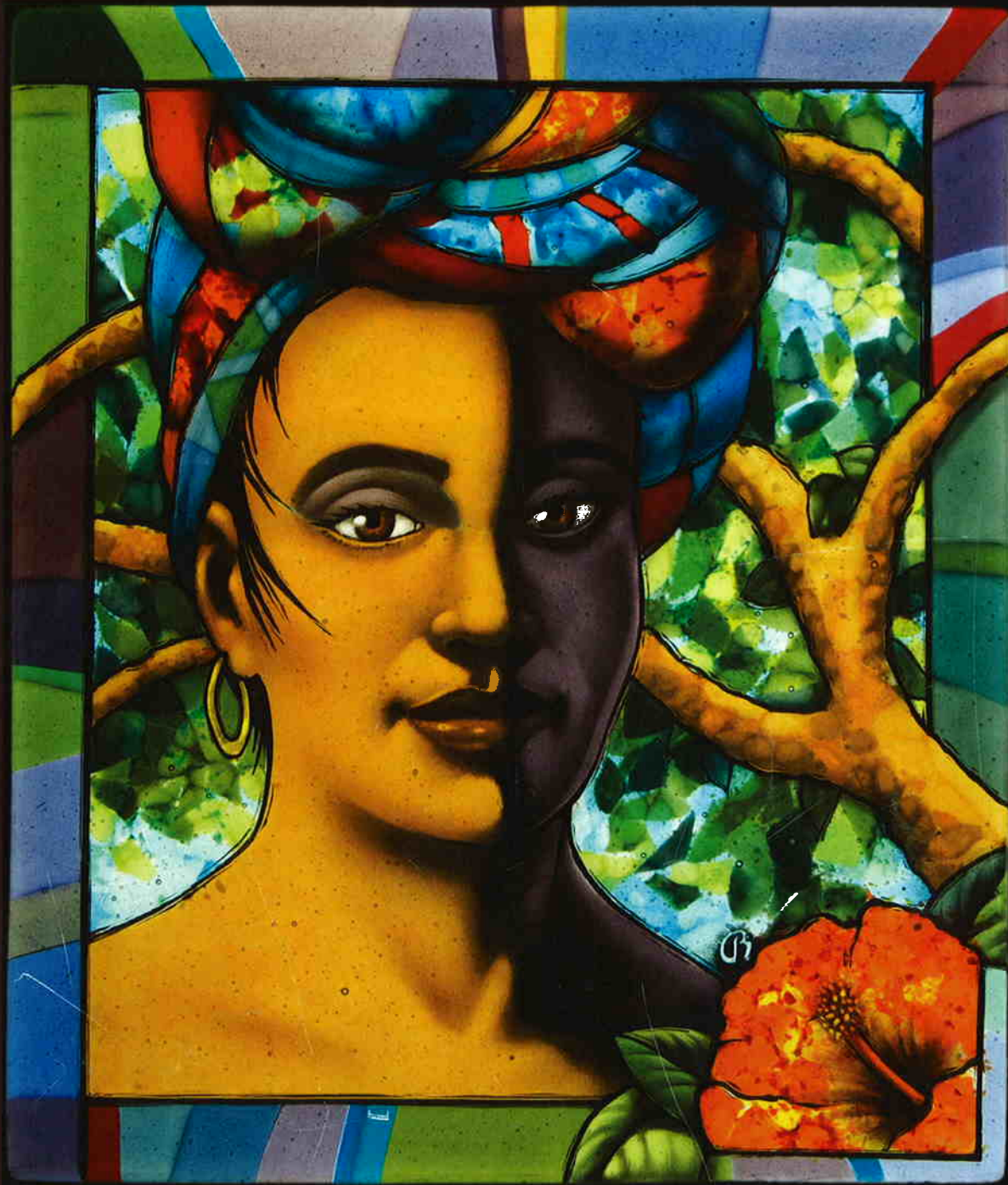


System[®]
96

For the Hot Glass Arts





Welcome to System 96®

System 96 is a family of heat-compliant glass products designed and produced to work together both technically and artistically in every facet of the hot glass arts. They are made by a group of independent companies dedicated to making those arts affordable, accessible and friendly for everyone.

System 96 users are passionate about the brand. The glass is soft and forgiving to cut. Surfaces are largely smooth and uniform. Compatibility is assured, "de-vit" is practically non-existent, and the price is substantially less than competing products.

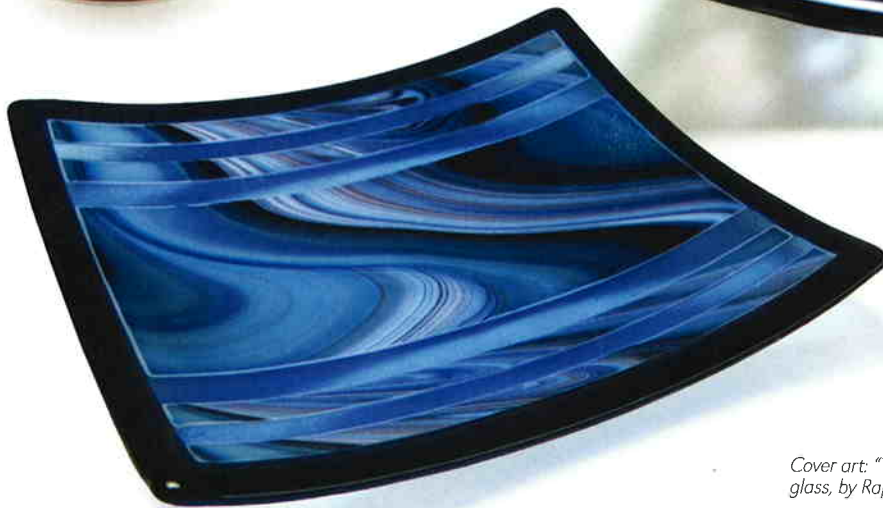
Perfect for the beginner, outstanding for the professional.
Welcome to the best overall glassworking system available.

*Cast obelisk by
Gerry Newcomb.*

*"Ruby Kelp" Blown
Vase by Rick Strini.*



Spirit™ and OpalArt™ are only two of the specialty glasses that are exclusive to the System 96 family of products.



"Beetle", 2" x 2" x 1", by Lewis Wilson.

Cover art: "Turbana Nueva" 11 1/2" x 13 1/2", mosaic frit and fused, painted sheet glass, by Raphael Schnepf.

Opalescent Sheet Glass

						
200SF White 200SFL Thin	209SF Crystal Opal	210-715F Ivory	210-725F Almond	216-715F Khaki	211-745F Chestnut	218-715F Stone
						
60-2502-96 Red 61-2502-96 Thin	290-725F C.C. Pink	234-725F C.C. Grape	60-520-96 Plum	240-745F Lilac	240-725F Mauve	291-615F Champagne
						
60-602-96 Flame	60-2702-96 Orange	60-355-96 Marigold	267-725F Sunflower	260-725F Yellow	226-745F Amazon 61-2267-96 Thin	222-725F Pastel Green
						
60-421-96 Riviera	238-725F Alpine Blue	233-745F Turquoise Bl.	223-725F Turquoise Gr.	61-726-96 Apple Jade (Thin only)	220-765F Dark Green	60-782-96 Olive
						
60-755-96 Fern 61-755-96 Thin	233-755F Mariner	230-725F Med. Blue	230-765F Dark Blue 61-2306-96 Thin	60-070-96 Cloud	1009SF Black (Machine Rolled) 1009SFL Thin 60-56-96 Black (Double Rolled) 61-56-96 Thin	

Reflective Opals are the pure expression of visible color and combined with Transparents, contribute the depth and refraction that makes art glass so appealing.



Above: fused murini bowl by Jeff Phelps. Right: blown, roll-up by Patty Gray.

Throughout the catalog, stock numbers ending in 96 are products of Uroboros Glass. All others are Spectrum Glass products, except where noted.

Transparent Sheet Glass



 60-906-96 Straw	 110.2SF Pale Amber	 110.8SF Med. Amber 61-1108-96 Thin	 111SF Dark Amber
 161SF Yellow	 61-358-96 Warm Yellow (Thin only)	 170.2SF Tangerine (strikes)	 171SF Orange
 60-7312-96 Lime 61-7312-96 Thin	 526-2SF Moss Green	 121SF Light Green	 60-707-96 Citron
 60-476-96 Neon Orchid 61-476-96 Thin	 130.8SF Pale Blue 61-1308-96 Thin	 60-404-96 Sapphire	 538-6SF Navy
 543-2SF Grape	 180.8SF Pale Gray		

Glass is a manipulator of light and translucency at its very essence. System 96 Transparent colors are bright, forgiving to cut, stable at re-melt, and deliver consistent, dependable results. They are the foundation for any glassworker's palette.

WYSIWYG HOTS — Say "wiz-ee-wig"...what you see is what you get! System 96 Reds and Oranges (except Tangerine) are non-striking hot colors — the most predictable anywhere. They incur little or no color change when fired, so you can avoid unpleasant surprises.



Above: Andres Perez, P.K. Glass Company, Miami, FL.
Below: "Carm's Wild Life" by Carmen Reynolds, Newberg, OR.
Bottom Right: "Horse", 2 x 2in., by Lewis Wilson.





60-57-96 Walnut



518-1SF Bronze



591-1SF Champagne



60-015-96 Urobium Pink
61-015-96 Thin



140.8SF Pale Purple



142SF Light Purple



60-611-96 LT. Cherry
61-611-96 Thin



151SF Cherry Red
151SFL Thin



60-612-96 Grenadine



152SF Ruby Red



534-2SF Violet



146SF Dark Purple



528-1SF Sea Green



528-4SF Olive



125SF Dark Green
61-700-96 Thin



523-8SF Hunter



523-2SF Teal



60-774-96 Ming Green
61-774-96 Thin



60-424-96 Cobalt
61-424-96 Thin



136SF Dark Blue



538-4SF Steel Blue



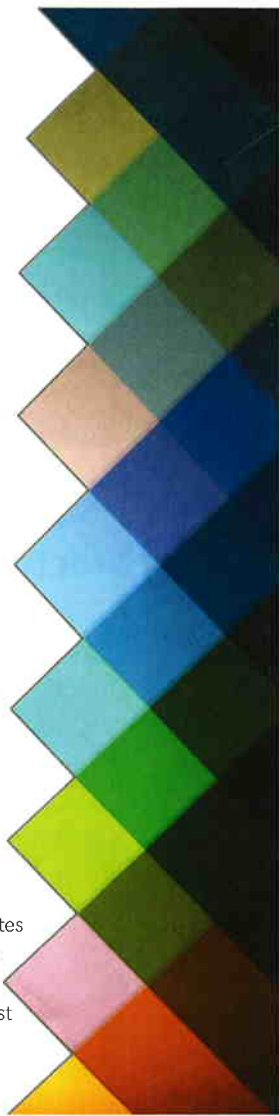
132SF Light Blue



533-3SF Deep Aqua



533-1SF Sky Blue
61-402-96 Thin



Transparency contributes yet another dimension: sixty colors become six-hundred as the artist learns to overlap and overlay.



Above: Private residence chandelier, 36in. diameter, re-melted sheet glass lit with LEDs by Rick Strini. Right: "Red Apple," 5 x 5in. rolled up red frit, luster, by Jesse Kelly.



Specialty Sheet Glass

Spirit™



Monterrey - Spirit/410-7SF
Ivory Opal/Clear



Murano - Spirit/4001SF
Black/Ivory/Clear



Sedona - Spirit/6115-7SF
Amber/Red/Opal



Rio - Spirit/4561SF
Ivory/Sunflower/Red/Clear



New Orleans - Spirit/6356-7SF
Blue/Sunflower/Red/Opal



Valhalla - Spirit/4941SF
Ivory/Pink/Grape/Clear



Geneva - Spirit/694-7SF
Pink/Grape/Opal



Philly - Spirit/635-7SF
Blue/Red/Opal



Seattle - Spirit/623-76SF
Green/Blue/Opal



Atlantis - Spirit/4361-76SF
Ivory/Yellow/Blue/Clear

Mouth-blown glass qualities in sheet glass form — nothing else approaches this celestial explosion of sweeping color. The glass that gives you everything...motion, energy and *Spirit*.



Vienna - Spirit/431-76SF
Ivory/Cobalt Blue/Clear

Fracture/Streamer & Fracture/Stringer



11-25-96 Green Frac./
Green Streamers



11-29-96 Pink/Green/
Frac./Green Streamers



14-05-96 White Frac. on
Clear/Black Stringer



14-524-96 White/Mauve
Frac./Black Stringer



11-51-96 Purple/Blue/Green
Frac./Green Streamers



11-45-96 Red/Green/Frac.
Green Streamers



14-406-96 Blue/White
Frac./Blue Stringer

Fracture-Streamer sheets are made from thin blown flakes and irregularly shaped hand cast streamers to achieve a random, natural pattern. Fracture-Stringer sheets also use thin blown flakes, but use machine pulled stringer, arranged in a more regular, graphic pattern.

Mardi Gras Sheets



13-2602-96 Yellow



13-5333-96 Deep Aqua



13-2502-96 Red



13-5262-96 Moss Green



13-56-96 Black



13-200-96 White



13-5605-96 Black on White

Dramatic combinations of stringer and frit hand cast into sheet glass. Slice, dice, stack and fuse for stunning effects. Saves time and prevents bubble entrapment compared to separate assembly at the kiln.

Streamer Bits



12-00-96 Clear Bits
on Clear



12-56-96 Black Bits
on Clear

Streamer bits are short pieces of hand cast streamers, arranged in a graffiti like pattern to create a unique, hand drawn look.



Specialty Sheet Glass

OpalArt™



OA/634-52SF
Blackberries & Cream



OA/233-54SF
Cascadia



OA/335-55F
Nautica



OA/325-52SF
Sour Apple



OA/623-52SF
Lagoon



OA/675-55F
Godiva



OA/244-54SF
Orchid

Our hypnotic OpalArt family is defined by magnificent swirls of color created when disparate glasses meet and freeze for all time. Always unique, OpalArt delivers an incomparable design option.

Crystal Opals



397-2SF
Crystal Opal Pink



357-2SF
Crystal Opal Red



693-74SF
Crystal Opal Pink/Aqua



633-76SF
Crystal Opal Blue/Aqua

Thin veins of color streak across a luminescent Crystal Opal base, resulting in a stunning watercolor-like sheet.

Streakies



60-5005-96
Chocolate/White



60-5605-96
Black/White



60-2705-96
Orange/White



60-7555-96
Fern Green/White



60-4245-96
Cobalt Blue/White



60-6125-96
Grenadine/White



60-5000-96
Chocolate/Clear



60-5600-96
Black/Clear



60-2700-96
Orange/Clear



60-7550-96
Fern Green/Clear



60-4240-96
Cobalt Blue/Clear



60-6120-96
Grenadine/Clear



60-005-96
White/Clear



60-93-96
Rootbeer/Cream



60-77-96
Dark Green/Green Opal



60-29-96
White/Pink Opal

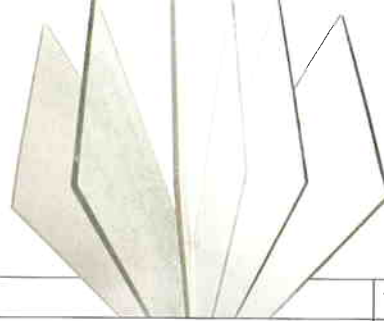


60-625-96
Dark Red/Red Opal

Hand-mixed colors in Streaky sheets provide strong non-repeating patterns and dynamic color graduation for the ultimate in natural expression.

Clear Sheet Glass

A multitude of Clear choices are available in this indispensable material; Machine rolled, Hand rolled, Thick, Thin, Clear and Crystal Clear in a remarkable array of sizes.

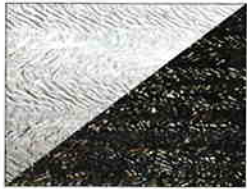


Product #	Description	Sheet Sizes	Thickness
100SFS	Clear Fusing Standard*	24 x 24" & 24" x 48" up to 30 x 72" (61 x 61cm & 61 x 122cm up to 76 x 183cm)	.125" (3mm)
100SFL	Clear Fusing Standard, Thin	24 x 24" & 24" x 48" (61 x 61cm & 61 x 122cm)	.078" (2mm)
100SFXTL	Crystal Clear	24 x 24" & 24" x 48" up to 30 x 72" (61 x 61cm & 61 x 122cm up to 76 x 183cm)	.125" (3mm)
100SFL-XTL	Crystal Clear, Thin	24 x 24" & 24" x 48" (61 x 61cm & 61 x 122cm)	.078" (2mm)
100SFXTL/DT	Crystal Clear Double-Thick	24 x 24" & 24" x 48" up to 30 x 72" (61 x 61cm & 61 x 122cm up to 76 x 183cm)	.195" (5mm)
100SFS/DT	Clear Double-Thick	24 x 24" & 24" up to 30 x 72" (61 x 61cm & 61 x 122cm up to 76 x 183cm)	.195" (5mm)
60-00-96	Clear Hand-Rolled Flat*	24 x 24" (61cm x 61cm) & 24 x 15" (61cm x 38cm)	.125" (3mm)
61-00-96	Clear Hand-Rolled Thin*	24 x 24" (61cm x 61cm) & 24 x 15" (61cm x 38cm)	.070" (1.8mm)

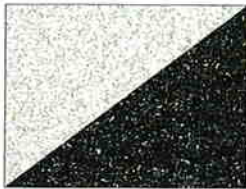
*Denotes availability in Iridescent

Textures

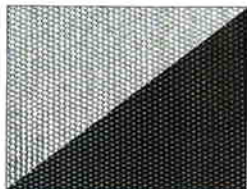
Surface texture is an optical component of every kiln fired project. Texture can be the primary focus, especially if backfilled with a contrasting frit color. Firing time and temperature variation controls degree of texture detail in the finished project.



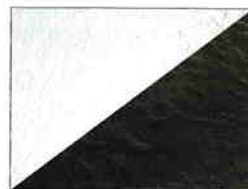
Herringbone Ripple
50-00-96 Clear
50-56-96 Black



Granite Ripple
51-00-96 Clear
51-56-96 Black



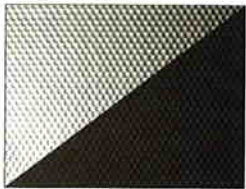
Radium Ripple
58-00-96 Clear
58-56-96 Black



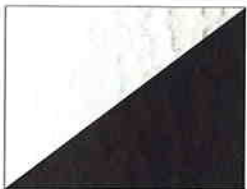
Granite
65-00-96 Clear
65-56-96 Black



Fibroid
70-00-96 Clear, 71-00-96 Thin
70-56-96 Black, 71-56-96 Thin



Radium
80-00-96 Clear
80-56-96 Black



Double Rolled Smooth
60-00-96 Clear, 61-00-96 Thin
60-56-96 Black, 61-56-96 Thin



100RSF Clear Ripple



100CSF Clear Cord

Thin Sheet Glass

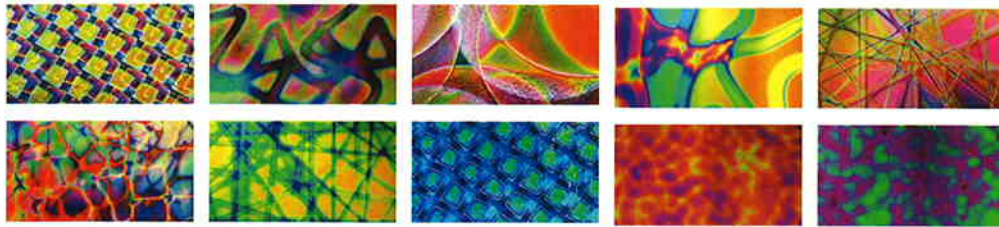
1.8mm Uroboros and 2mm Spectrum thin sheets provide an added capacity for delicacy, weight reduction, stacking precision, and color overlay. Many available with Iridescent coating.

*Trapped bubbles/ Frit work (left) by Janet Zambai.
Opposite page: Dichroic pendant by Hsin Chang.
"Black Pearl" iridescent and dichroic bowl by Lisa Vogt.*

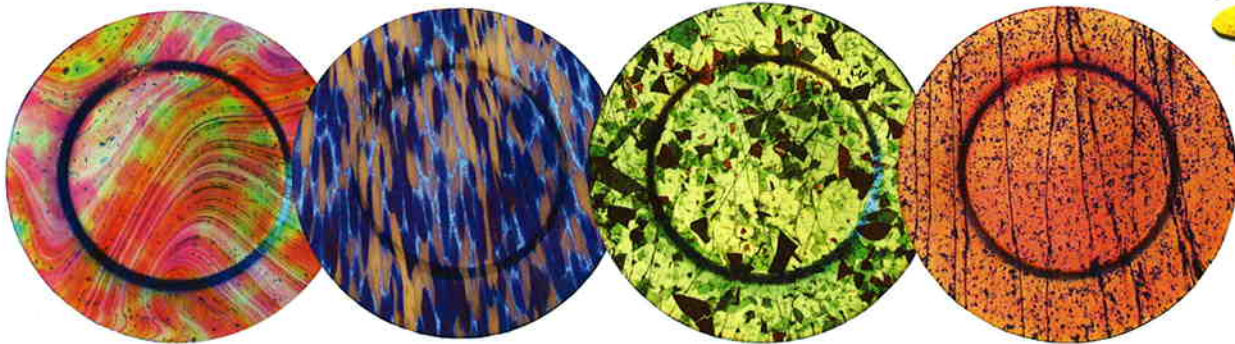


Dichroic Glass

Below are just a few examples of the hundreds of Dichroic choices available in System 96. To view the entire range of System 96 Dichroic glass and accessories, visit: www.cbs-dichroic.com.



The ultra-thin-layer quartz and metallic coatings on Dichroic glass are applied with electron beams in a vacuum chamber, creating the most vibrant, space-age colors imaginable. The transmitted and reflective character of each coating is completely different. System 96 Dichroics are specifically made for use in all hot glass applications.



*Dinner Plate Chargers,
Howard Sandberg,
13in. Diameter*

Iridescent Glass

Iridescent Textures



Iridescent Color



Iridescent glasses have been flash-fired with a micro-thin layer of metallic crystal, creating lustrous jewel-like colors in reflected light. System 96 Hi-Fire iridescent surfaces are permanently bonded to ensure retention and maturity at full fuse temperatures.



Glass Frit

Below: Approximate Frit particle sizes.



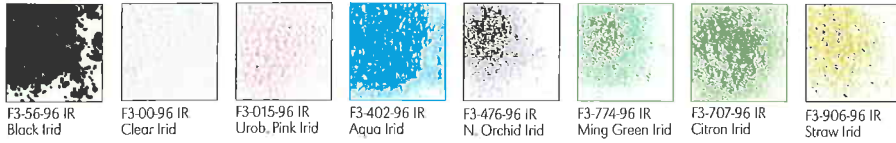
F3-00-96 Clear	F3-01-96 Water Clear	F3-015-96 Urobium Pink	F3-404-96 Sapphire Blue	F3-476-96 Neon Orchid	F3-774-96 Ming Green	F3-707-96 Citron	F3-906-96 Straw
F3-5911-96 Champagne	F3-1102-96 Pale Amber	F3-1108-96 Medium Amber	F3-111-96 Dark Amber	F3-5181-96 Bronze	F3-161-96 Yellow	F3-1702-96 Tangerine	F3-171-96 Orange
F3-146-96 Dark Purple	F3-103-96 Turns Pink	F3-5342-96 Violet	F3-142-96 Light Purple	F3-1408-96 Pale Purple	F3-151-96 Cherry Red	F3-612-96 Grenadine	F3-611-96 Light Cherry
F3-5432-96 Grape	F3-1308-96 Pale Blue	F3-132-96 Light Blue	F3-136-96 Dark Blue	F3-424-96 Cobalt Blue	F3-5384-96 Steel Blue	F3-5386-96 Navy Blue	F3-1808-96 Pale Gray
F3-5262-96 Moss Green	F3-5284-96 Olive Green	F3-5238-96 Hunter Green	F3-125-96 Dark Green	F3-121-96 Light Green	F3-5281-96 Sea Green	F3-5331-96 Sky Blue	F3-5333-96 Deep Aqua
F3-7312-96 Lime	F3-5232-96 Teal Green	F3-2672-96 Sunflower Opal	F3-355-96 Marigold Opal	F3-2114-96 Chestnut Opal	F3-2702-96 Orange Opal	F3-602-96 Flame Opal	F3-2502-96 Red Opal
F3-421-96 Riviera Opal	F3-2335-96 Mariner Opal	F3-2382-96 Alpine Opal	F3-2342-96 C.C. Grape Opal	F3-2404-96 Lilac Opal	F3-520-96 Plum Opal	F3-2402-96 Mauve Opal	F3-2902-96 C.C. Fink Opal
F3-2306-96 Cobalt Opal	F3-2302-96 Med. Blue Opal	F3-2334-96 Turq. Blue Opal	F3-2232-96 Turq. Grn. Opal	F3-2602-96 Yellow Opal	F3-2264-96 Amazon Opal	F3-2222-96 Pastel Grn. Opal	F3-755-96 Fern Green Opal
F3-2101-96 Ivory Opal	F3-209-96 Crystal Opal	F3-200-96 White	F3-56-96 Black	F3-070-96 Cloud Opal	F3-2181-96 Stone Opal	F3-782-96 Olive Opal	F3-2206-96 Dk Green Opal
F3-2161-96 Khaki Opal	F3-2911-96 Champagne Opal	F3-2107-96 Almond Opal					

Above: Asian Poppy Bowl by Lisa Vogt.
Right: "PDV Still Life 2" by Bill Matulich. (Lightly fired Frit).



Glass Frit plays a role in every segment of the hot glass arts. Each color is clean-crushed, magnetically cleaned, and screened into specific sizes for a variety of applications. DualTone Frit is made from mixed-color glass, for enhanced variation and natural shading. Compatible throughout the System 96 family, five particle sizes are available in every color: Powder, Fine, Medium, Coarse, and Mosaic. Packed in 8.5 oz (240g) and 4 lb (1.82kg) jars, and 40 lb (18.2kg) pail.

Iridescent Frit



DualTone Frit



Confetti

Hand blown, eggshell-thin shards of intense colors. Use for layering and shading, or in combination with frit, stringer or noodle. Packed in reusable screw top clear jars in single colors or a mixed 'Mardi Gras'. 4 oz (115g) each.



Above: Frit leaves (detail) by Mary Van Cline.
Right: "Spring Branch" by Raphael Schnepf.

Rods, Stringer & Noodle



Color	Description	Rod	Noodle	Stringer
	Cloud Opal	RO-070-96		
	Cherry Red Semi-Opal	RO-1511-96	N-151-96-5	S-151-96-5
	Yellow Semi-Opal	RO-1611-96		
	Orange Semi-Opal	RO-1711-96	N-171-96-5	S-171-96-5
	White Opal	RO-200-96	N-200-96-5	S-200-96-5
	Firelight Opal	RO-209-96		
	Almond Opal	RO-2107-96	N-2107-96-5	S-2107-96-5
	Dark Green Opal	RO-2206-96	N-2206-96-5	S-2206-96-5
	Pastel Green Opal	RO-2222-96		
	Turquoise Green Opal	RO-2232-96		
	Amazon Green Opal	RO-2264-96	N-2264-96-5	S-2264-96-5
	Medium Blue Opal	RO-2302-96	N-2302-96-5	S-2302-96-5
	Cobalt Blue Opal	RO-2306-96	N-2306-96-5	S-2306-96-5
	Turquoise Blue Opal	RO-2334-96	N-2334-96	S-2334-96
	Alpine Blue Opal	RO-2382-96		
	Mauve Opal	RO-2402-96	N-2402-96-5	S-2402-96-5
	Lilac Opal	RO-2404-96		
	Red Opal	RO-2502-96	N-2502-96-5	S-2502-96-5
	Yellow Opal	RO-2602-96	N-2602-96-5	S-2602-96-5
	Sunflower Opal	RO-2672-96		
	Orange Opal	RO-2702-96	N-2702-96-5	S-2702-96-5
	Champagne Opal	RO-2911-96		
	Marigold Opal	RO-355-96	N-355-96-5	S-355-96-5
	Riveria Blue Opal	RO-421-96		
	Plum Opal	RO-520-96		
	Black Opal	RO-56-96	N-56-96-5	S-56-96-5
	Flame Opal		N-602-96-5	S-602-96-5
	Fern Green Opal		N-755-96-5	S-755-96-5
	Olive Green Opal		N-782-96-5	S-782-96-5

Color	Description	Rod	Noodle	Stringer
	Clear	RT-00-96	N-00-96-5	S-00-96-5
	Urobium Pink	RT-015-96		
	Pale Amber	RT-1102-96		
	Medium Amber	RT-1108-96	N-1108-96-5	S-1108-96-5
	Dark Amber	RT-111-96	N-111-96-5	S-111-96-5
	Light Green	RT-121-96		
	Dark Green	RT-125-96	N-125-96-5	S-125-96-5
	Dark Blue	RT-136-96	N-136-96-5	S-136-96-5
	Deep Purple	RT-146-96	N-146-96-5	S-146-96-5
	Pale Gray	RT-1808-96		
	Neon Orchid	RT-476-96		
	Bronze	RT-5181-96		
	Moss Green	RT-5262-96	N-5262-96-5	S-5262-96-5
	Sea Green	RT-5281-96	N-5281-96-5	S-5281-96-5
	Olive Green	RT-5284-96	N-5284-96-5	S-5284-96-5
	Sky Blue	RT-5331-96		
	Deep Aqua	RT-5333-96	N-5333-96-5	S-5333-96-5
	Violet	RT-5342-96		
	Steel Blue	RT-5384-96		
	Navy Blue	RT-5386-96		
	Grape	RT-5432-96	N-5432-96-5	S-5432-96-5
	Pink Champagne	RT-5911-96		
	Citron	RT-707-96		
	Ming Green	RT-774-96		
	Straw	RT-906-96		

Noodles

These flat, fettuccini-like glass Noodles are about 3/16" (4.5 mm) wide and 17.5" (45cm) long. Snap them with your fingers or nip them to desired length, then use them as straight design lines or bend them in a flame. Versatile, fun and indispensable. Packed in 5 oz (140g) clear plastic tubes (approx 25 noodles each), in single colors or in a mixed "Mardi Gras" pack. Dichroic coated clear and black noodles packed 12 per tube.

Stringer

Delicate strands of color permit fine linear detail and unlimited creative design. Use straight from the tube or shape in a flame. Approximately 1.1mm dia. x 17.5" (45cm) long. Packed in 5oz (140g) clear plastic tubes, (approx. 100 stringers per tube), in single colors or in a mixed "Mardi Gras" pack.

Rods

Hot drawn rods are a key form in the glassworker's toolkit. Use in torch work, fusing, slumping, casting and for pickup in glass blowing. Specially annealed to minimize popping, and formulated for color stability. Available in almost every Transparent and Opalescent color in the System 96 family. 19.5" (50cm) long x 6mm diameter, packed in 4lb. bundles.



Vases by Lynn Read, made from System 96 Rods.



Packaged Goods

STRIPES™



Monterrey STRIPE/410-7SF Ivory Opal/Clear



Sedona STRIPE/6115-7SF Amber/Red/Crystal Opal



Murano STRIPE/4001SF Black/Ivory/Clear



Vienna STRIPE/431-76SF Ivory/Cobalt Blue/Clear



Atlantis STRIPE/4361-76SF Ivory/Yellow/Blue/Clear



Seattle STRIPE/623-76SF Green/Blue/Opal

2 x 12in. strips of *striped* glass! Colors coordinate perfectly with Spirit sheets. Six-piece packs or mixed color "shortstacks."



Rio STRIPE/4561SF Ivory/Sunflower/Red/Clear



Philly STRIPE/635-7SF Blue/Red/Opal



New Orleans STRIPE/6356-7SF Blue/Sunflower/Red/Opal



Valhalla STRIPE/4941SF Ivory/Pink/Grape/Clear



Geneva STRIPE/694-7SF Pink/Grape/Opal



Murano STRIPE Bowl by Jim Gregory.

Pebbles™



Pale Amber



Yellow



Med. Amber



Orange (strikes)



Red



Pale Purple



Pink Opal



Crystal Clear



Black



White



Green



Amazon Opal



Sky Blue



Turquoise Opal



Grape



Light Blue

Flat bottom, round topped, 1/2" droplets that make great design elements. Available in 1/2lb. bags in 16 colors or assorted.

Cut-Ups™



Maple Leaf



Blob



Seahorse



Star



Butterfly



Fish



Heart



Lightning



Crescent

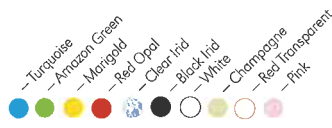


Dove

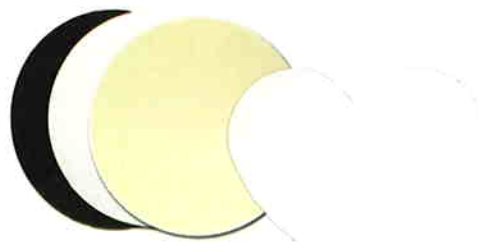


Spiral

Forty pre-cut whimsical shapes and colors. Perfect accents for fused work. Each Cut-Up comes packaged on a 3" square card.



Pre-Cut Bases



Pre-cut circles reduce prep time and eliminate scrap. 10-inch is also available in Double-Thick (5mm) Clear, great for solid bases with zero bubbles.

Circles	Size	Description
GBC-12-100	12 in.	Clear
GBC-10DT-100	10 in.	Clear Double Thick
GBC-10-100	10 in.	Clear
GBC-10-1009	10 in.	Black
GBC-10-200	10 in.	Opal White
GBC-10-210-72	10 in.	Opal Almond
GBC-8-100	8 in.	Clear
GBC-8-1009	8 in.	Black
GBC-8-200	8 in.	Opal White
GBC-8-210-72	8 in.	Opal Almond

Hearts	Size	Description
GBH-6-200	6 in.	Opal White
GBH-6-290-72	6 in.	Opal Cotton Candy Pink
GBH-8-200	8 in.	Opal White
GBH-8-290-72	8 in.	Opal Cotton Candy Pink

To see all of the pre-cut Glass Craft Components visit: www.system96.com



Artists Credits, Back Cover, Left to Right:

"Old Hands", 24½ x 21in., Fritography, by Michael DuPille; Tangerine Rondel Chandelier, 24in. diameter x 34in. tall, remelted & blown sheet glass, by Rick Strini; fused/blown roll-up, 10in., sheet glass, by Patty Gray; Salmon Paddle, 6 x 45in., by Jewels Durham; fused Black Casting Billets/copper leaf; Clown Fish, 6 x 1½in., torch work with rods, by Deb Crowley; 20in. fused & slumped sink, fused dichroic sheet glass, stringer and noodles, by Lisa Vogt; Black & White Bracelet, 3½in. diameter, torch work, by Kevin Ward; Vase, 9 x 4in., rolled up & blown black and white rods with orange lip wrap, by Lynn Read; Pattern Dish Series, fused & slumped, Kevin Brophy; Private Residence Ceiling Light Installation detail, remelted & blown sheet glass, by Rick Strini.

Don't confuse the last page with "end of story". Our System 96 family is growing so fast we can hardly keep up with it ourselves. Stay informed by visiting www.System96.com regularly and by signing up to receive new product information by email.



Spectrum Glass Company (Woodinville, WA) and Uroboros Glass (Portland, OR) combined bring over 50 years of art glass manufacturing expertise to the hot glass community and the fast-growing kilnformed glass arts. Coatings by Sandberg (Orange, CA) is a highly specialized maker of the dazzling phenomenon of Dichroic Glass. In cooperation with other carefully chosen companies and individuals around the world, we manufacture the System 96® tested compatible family of art glass products. All trademarks are the property of their respective owners.